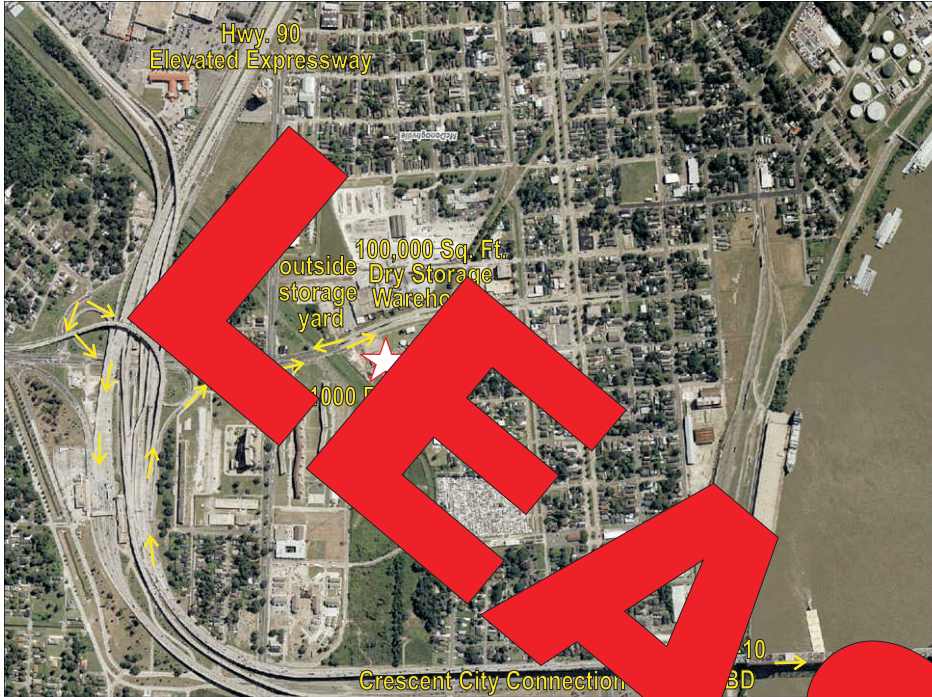


FOR LEASE

1000 Burmaster, Gretna, LA (New Orleans SMSA, 2 mi. to CBD)
100,000 Sq. Ft. Dry Goods Warehouse



- 100,549 Sq. Ft. warehouse
- Additional 3 acres available for lease
- Paved and fenced yard for truck storage
- 4,171 Sq. Ft. truck maintenance shop
- 4 dock high loading doors
- Conveniently located near the Crescent City Connection



NAI Latter & Blum

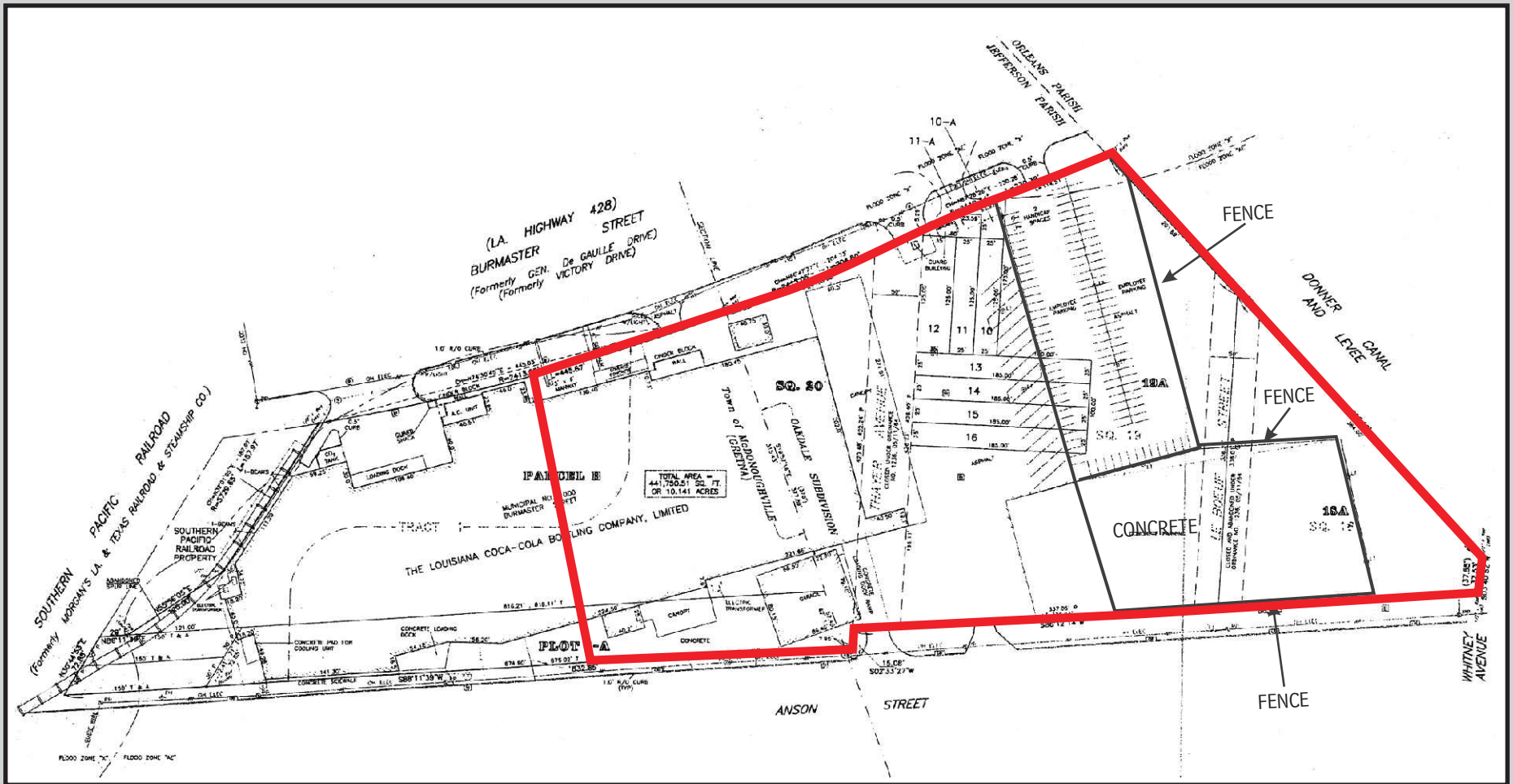
Commercial Real Estate Services, Worldwide.

NAI/Latter & Blum, Inc./Realtors®
430 Notre Dame Street
New Orleans, LA 70130-3610
www.latterblum.com

For more information, please contact:

James Barse, CCIM, SIOR
NAI/Latter & Blum, Inc.
Commercial Real Estate Broker
3836 Spencer Street
Harvey, LA 70058
Office: (504) 340-9339
Fax: (504) 347-0898
E-mail: jbarse@latterblum.com

The information contained herein has either been given to us by the owner of the property or obtained from sources that we deem reliable. No warranties or representations, expressed or implied are made as to the accuracy of the information contained herein, and same is submitted subject to errors, omissions, change of price, rental or other conditions, withdrawal without notice, and to any special listing conditions imposed by our principals.



1000 Burmaster

Detached garage 7,200 Sq. Ft.

4 units
93,349 Sq. Ft.

