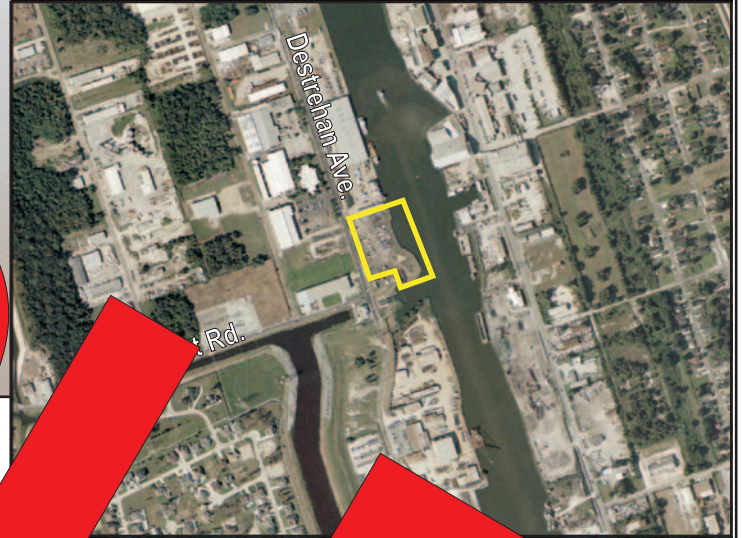


# FOR SALE

*Westbank  
Industrial Waterfront  
Development Opportunity*



Lot H-1A fronting  
Destrehan Ave.

Harvey LA

- ◆ Size: 2.5 acres of well stabilized land
- ◆ Harvey Canal frontage: 490' with bulkhead with quick access to the Mississippi River and Intracoastal Waterway
- ◆ Street frontage: 400' on Destrehan Ave. a major north/south road-one mile to Hwy. 90
- ◆ Zoned: M-3 Heavy Industrial
- ◆ Great Price: \$3.44/Sq. Ft.

*This tract of land features 490' frontage along the Harvey Canal. The 2.5 acre site is bulkheaded, clear, and compacted, with 400' frontage along Destrehan Ave. Destrehan Ave. is being upgraded to a four lane thoroughfare and which will offer quick access to Westbank Expressway. The site adjoins the Stewart Stevenson facility and is only one mile from the Mississippi River.*

*For further information please contact:*

**James Barse, CCIM, SIOR**  
NAI/Latter & Blum, Inc.  
Commercial Real Estate Broker  
3836 Spencer St.  
Harvey, LA 70058  
Office: (504) 340-9339  
Fax: (504) 347-0898  
Email: [jbarse@latterblum.com](mailto:jbarse@latterblum.com)

**NAI LATTER & BLUM**  
INC/REALTORS®  
COMMERCIAL REAL ESTATE SERVICES, WORLDWIDE.

800 Common Street Suite 1000 New Orleans, Louisiana 70112 - 2338

[www.latterblum.com](http://www.latterblum.com)