

# FOR LEASE/SALE

## River Rd. at Ormond Blvd., Destrehan, LA Lots B-E

### Ormond Batture



- 3,800' Batture on the Mississippi River
- Heart of the grain district
- Permitted for 60+ barges
- 10 anchored Mooring Buoys
- Mississippi River mile marker 123

This property offers a great location for a barge fleet operation. New steel pile anchored mooring buoys are already permitted and ready for your barges. Attractive terms available. Call agent for more details.

# NAI Latter & Blum

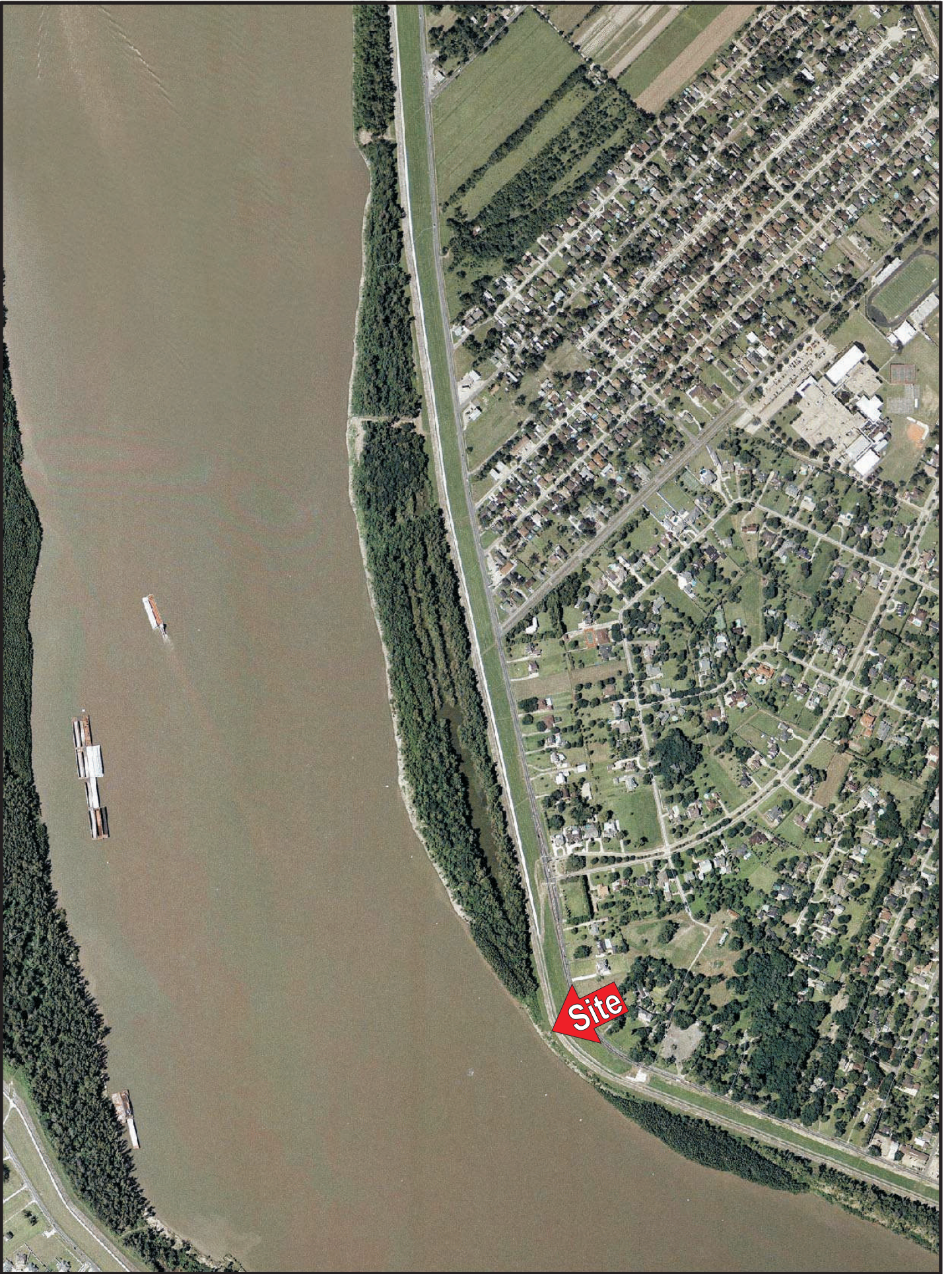
Commercial Real Estate Services, Worldwide.

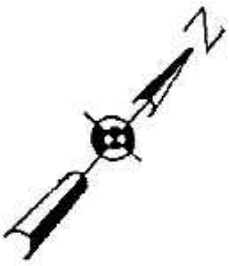
NAI/Latter & Blum, Inc./Realtors®  
430 Notre Dame Street  
New Orleans, LA 70130-3610  
www.latterblum.com

For more information, please contact:

**James Barse, CCIM, SIOR**  
NAI/Latter & Blum, Inc.  
Commercial Real Estate Broker  
3836 Spencer Street  
Harvey, LA 70058  
Office: (504) 340-9339  
Fax: (504) 347-0898  
E-mail: [jbarse@latterblum.com](mailto:jbarse@latterblum.com)

The information contained herein has either been given to us by the owner of the property or obtained from sources that we deem reliable. No warranties or representations, expressed or implied are made as to the accuracy of the information contained herein, and same is submitted subject to errors, omissions, change of price, rental or other conditions, withdrawal without notice, and to any special listing conditions imposed by our principals.



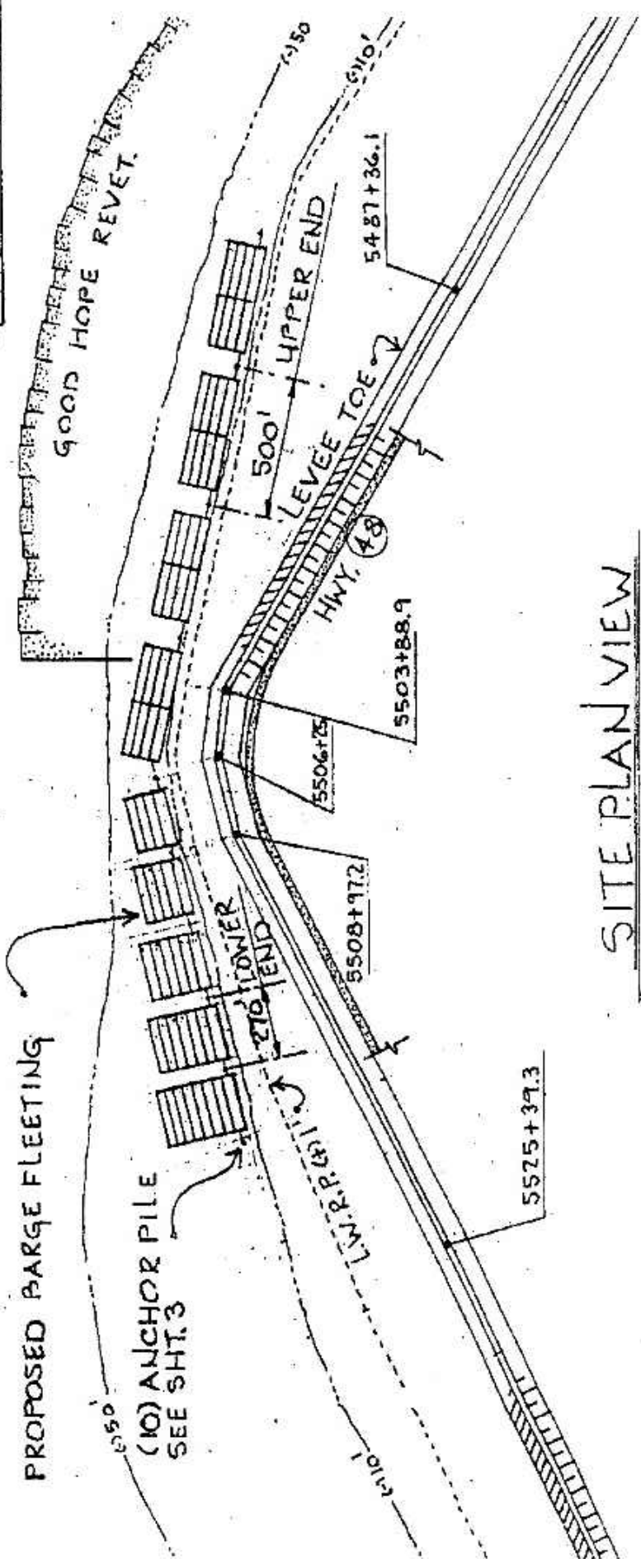


MISS. RIVER FLOW

M.P.  
123

NOTE: NO MAKING OR BREAKING OF  
LINE TOWNS WILL OCCUR  
CHANNELWARD OF FLEET.

PROPOSED BARGE  
FLEET FACILITIES  
FOR  
HERBERT D. HUGHES  
ESTATE TRUST  
JEFFERSON LOUISIANA  
PREPARED BY  
RICHARD WRIGHT & ASSOC.  
METAIRIE LOUISIANA  
DEC. 198  
SHT. 2 OF 3



SITE PLAN VIEW

